

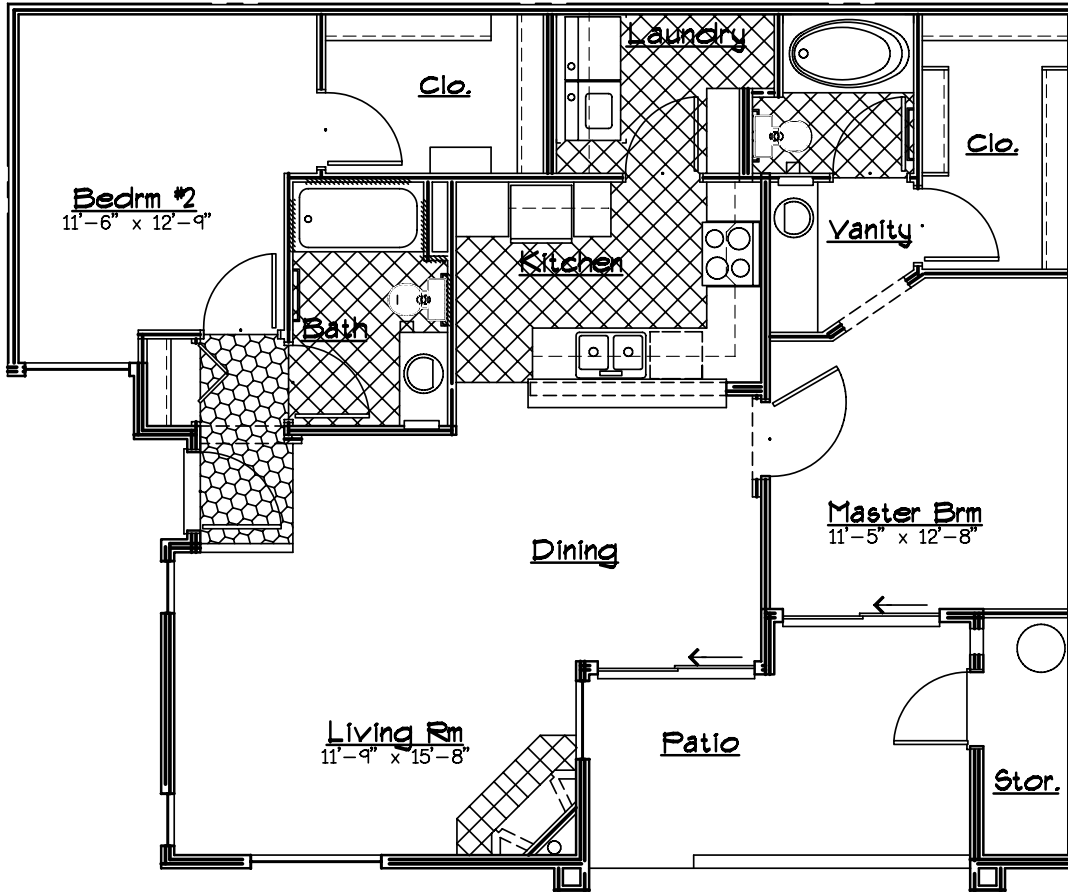


*Timberline*  
place

4343 east soliere avenue, flagstaff, az 86004 • 928.522.7099 • TimberlinePlace.com

**2 Bedroom/2 Bath square feet: 1,046\***

Boasting two bedrooms and two full baths, this spacious split floor plan ensures privacy and comfort. A large master bedroom with private bath, walk-in closets in both bedrooms, an oversized kitchen with breakfast bar, and expanded laundry room deliver ample space for easy living. Do a little stargazing, relax by the fire, entertain friends or take in the fresh mountain air from your own private patio or balcony accessible from both the master bedroom and dining area.



**INCLUDED FEATURES:**

- 9-foot ceilings
- Alarm system
- Ceiling fans
- Central heat
- Dishwasher
- Full-size washer & dryer
- Garbage disposal
- Gas fireplace
- Private patio/balcony
- Spacious closets
- Storage room
- Vaulted ceilings\*\*
- Wheelchair accessible\*\*
- Wireless internet

\* Approximate square footage

\*\* Select homes



Equal housing opportunity. All information is preliminary and subject to change. All sales are conditional until insurance of the final public report.